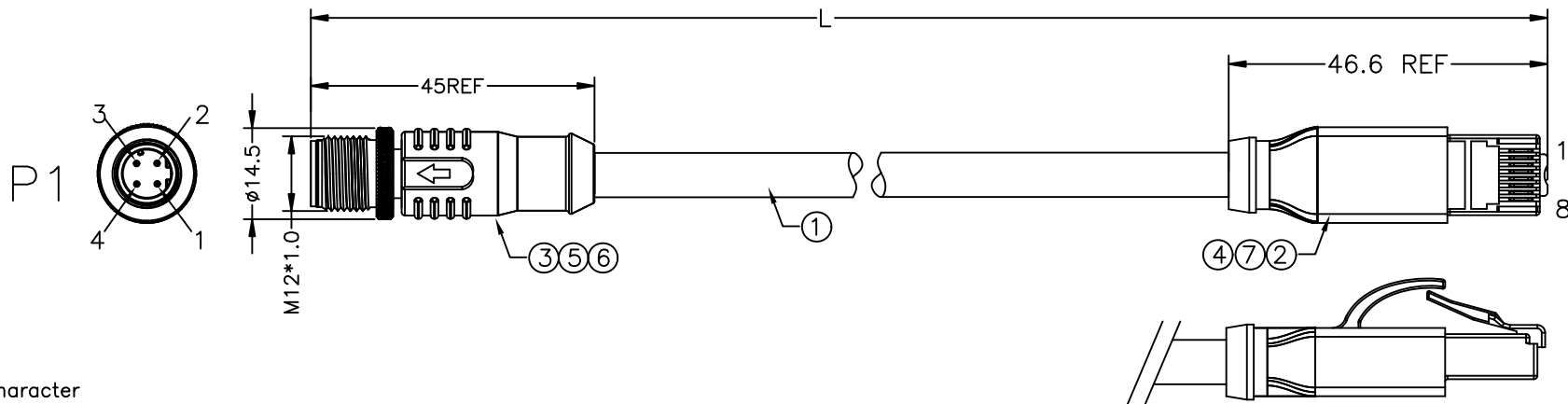


PROJECT NO:

REV	DESCRIPTION	DATE	APPROVED
S0	CREATED DRAWING	2026/05/12	YCL



Electrical character


Rated voltage	250V
Rated current	4A
Mechanical characteristics (mating cycle)	>100
Degree of protection (ISO-20653, IEC60529)	IP67(P1)
Operating temperature (depending on cable quality)	-25°C ~ +80°C
Destructive withstand force between connector and overmold exceeds	5kgf
Tightening torque (range)	0.4~1.8Nm
Pollution degree	3

ALL MATERIALS ARE RoHS COMPLIANT

WIRE LIST

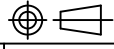
P1	PAIR	COLOR	P2
1	X X	ORANGE/WHITE	1
2		ORANGE	2
3	X X	GREEN//WHITE	3
4		GREEN	6
SHELL		BRAID	SHELL

ITEM	PART NO.	SPECIFICATION	Q'TY	UNIT
⑦	PL00011	BLACK PVC 45P	6	PCS
⑥	PL00106	AMBER TRANSPARENT LOW PRESSURE INJECTION PLASTIC	3	g
⑤	N/A	M12 D CODING 4PIN MALE CONNECTOR WITH SHIELD	1	SET
④	PL00007	HD-PE	2	g
③	PL00004	BLACK TPU	6	g
②	CN00486	RJ45 8P8C CONNECTOR	1	PCS
①	N/A	UL20554 CAT5E SFTP 26AWG*2P+AB JACKET DARK GREEN PU OD=6.4MM	1	PCS



SIGNAL[®]

Shenzhen Signal Electronics co.,Ltd

DRAWN BY		DATE	TITLE	
CHECKED BY		DATE	M12 D 4P/M TO RJ45 8P/M CABLE	
CHECKED BY		DATE	SGN NO	120404-57-220-Xm
APPROVED BY		DATE	DWG NO	
			CUSTOMER	
			REV.	S0
			TOLERANCES ARE:	
			DECIMALES	ANGLES
			.x ±0.5	x.' ±2.0°
			.xx ±0.20	.x' ±1.0°
			THIRD ANGLE PROJECTION	
			SIZE: A4	UNITS: mm
			SCALE: 1:1	SHEET: 1 OF 1

THE INFORMATION CONTAINED IN THIS DRAWING IS THE SOLE PROPERTY OF SIGNAL COMPANY. ANY REPRODUCTION IN PART OR WHOLE WITHOUT THE WRITTEN PERMISSION OF SIGNAL COMPANY IS PROHIBITED.