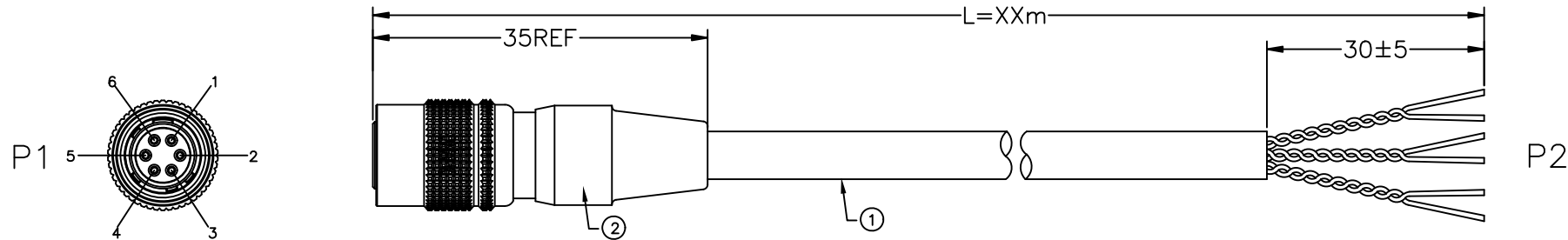


REV	DESCRIPTION	DATE	APPROVED
S0	CREATED DRAWING	2025/12/24	HQC



说明:

1.测试条件

导通阻抗: 5ΩMAX

绝缘阻抗: 10MΩMIN

电 压: DC 300V/0.1S

2.所有材料都符合RoHS标准

3.100%开/短路测试

接线表

P1	PAIR	颜色	P2
1	X X	棕色	OPEN
2		蓝色	
3	X X	白色	
4		黑色	
5	X X	粉色	
6		灰色	

SIGNAL [®] Shenzhen Signal Electronics Co., LTD		TITLE	
		SHR10 6-CORE STRAIGHT HEAD SHEATHED CONNECTING WIRE - STANDARD WIRE	
DRAWN BY		SGN NO 950106-06-010-XM	
CHECKED BY		REV.	
CHECKED BY		DWG NO	
APPROVED BY		CUSTOMER	
DATE		S0	
DATE		TOLERANCES ARE:	
DATE		DECIMALES	THIRD ANGLE PROJECTION
DATE		ANGLES	SIZE: A4
DATE		.x ±0.5	UNITS: mm
DATE		.x' ±2.0'	SCALE:
DATE		.xx ±0.20	SHEET: 1 OF 1
DATE		.x'' ±1.0''	

②	950106-21-001	推拉自锁系列O1型6芯母头焊线式连接器	1	SET
①	CA01048	UL20554 26AWG*3P OD=5.1mm 外被灰色(GY05)(RAL 7040) PUR (聚醚) (芯线颜色:棕&蓝、白&黑、粉&灰)	1	PCS
ITEM	PART NO.	SPECIFICATION	Q'TY	UNIT